

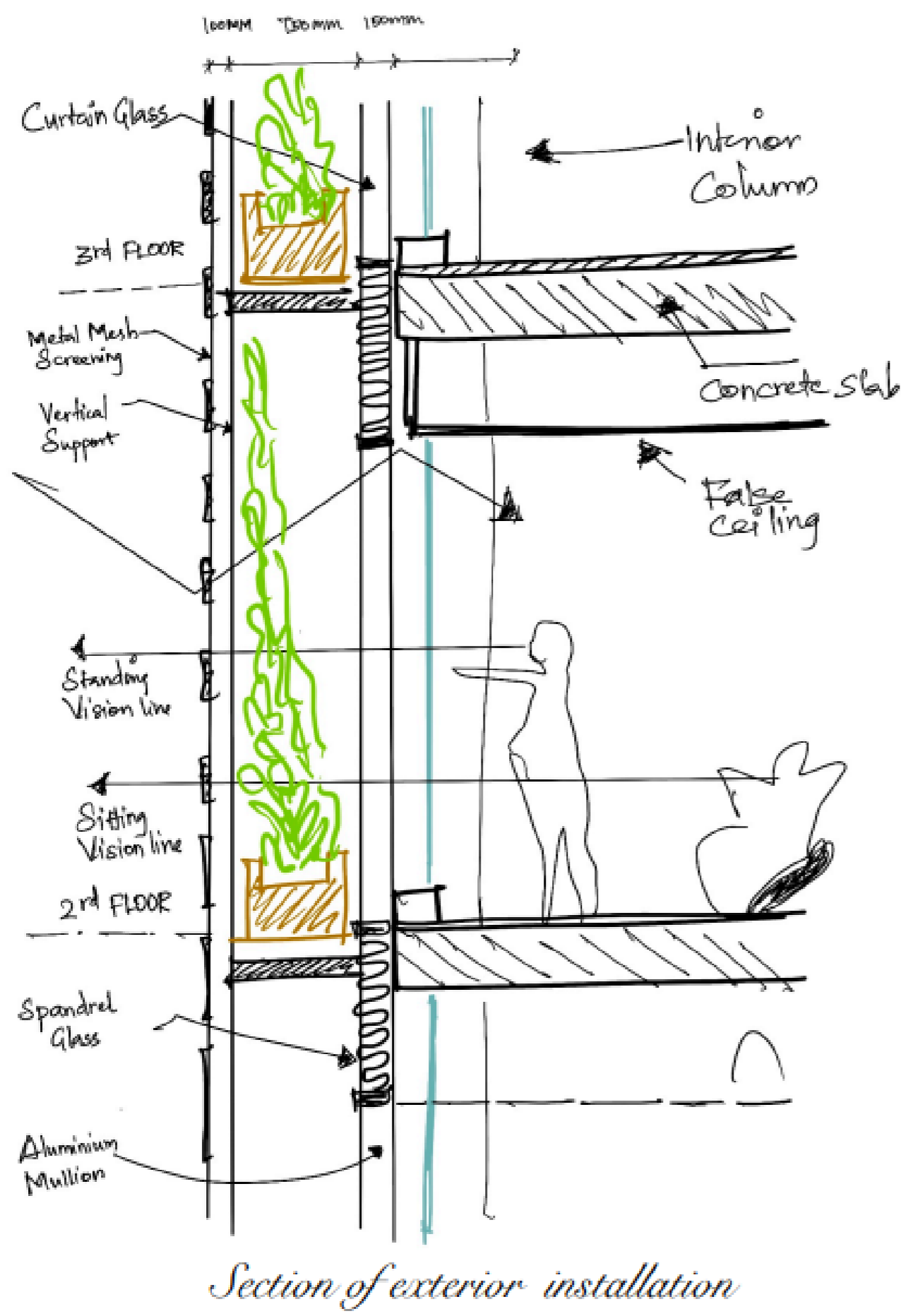
# TECHNOLOGY PARK

The main aim of the study is to design the stress-free work environment and with facilitation of working anywhere in the office in order to enable an efficient, happier and healthier workplace.

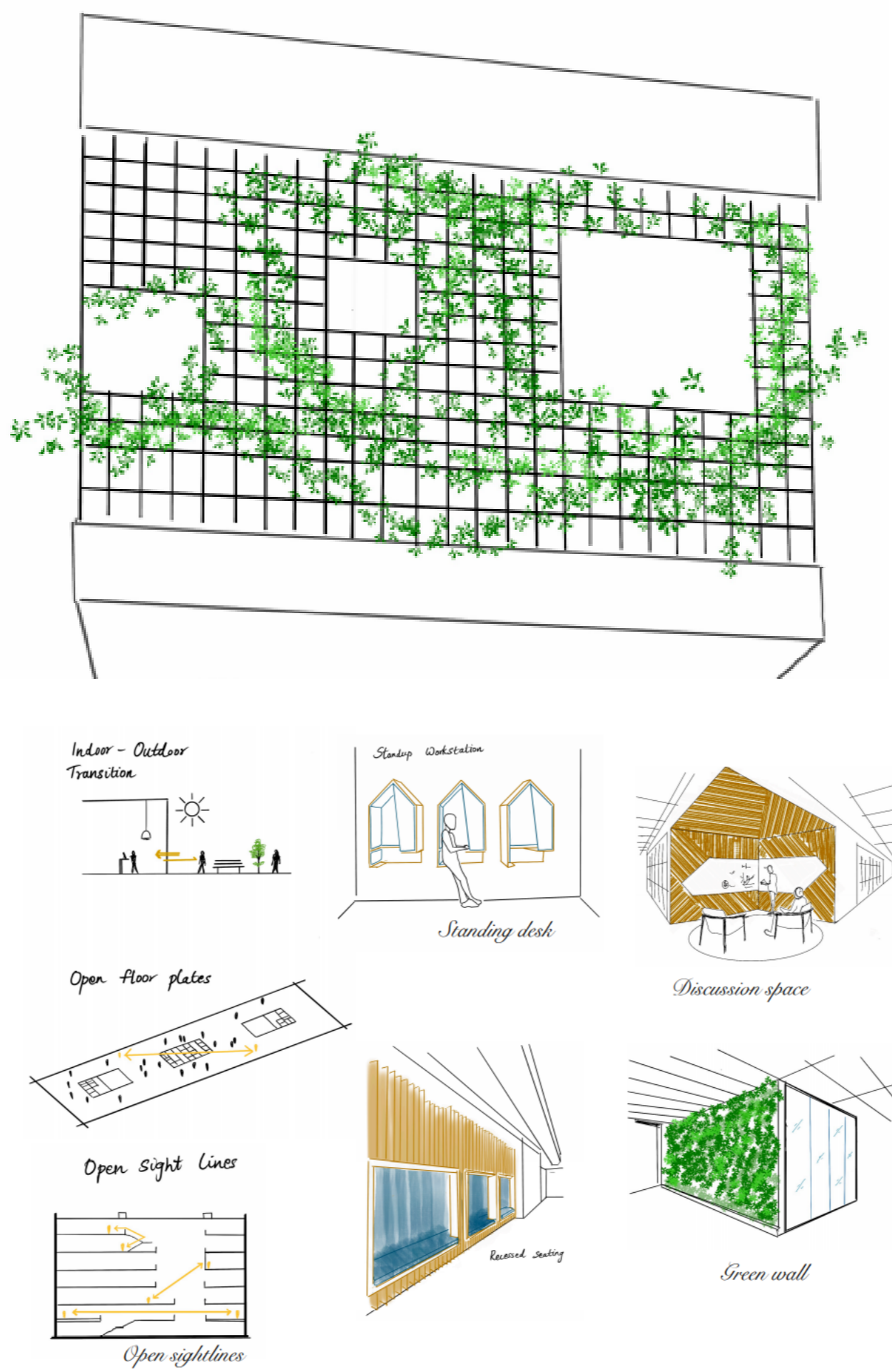
To create a SUSTAINABLE environment for the workers to evokes the creativity, innovation and collaboration within the building. The plan is to design a space by the BIOPHILIC concept that is accessible, mobile, socially connected, culturally relevant and personally sustaining spaces." And to provide a multiple flexible options of working environment in the workplace improves productivity and satisfaction of workers.



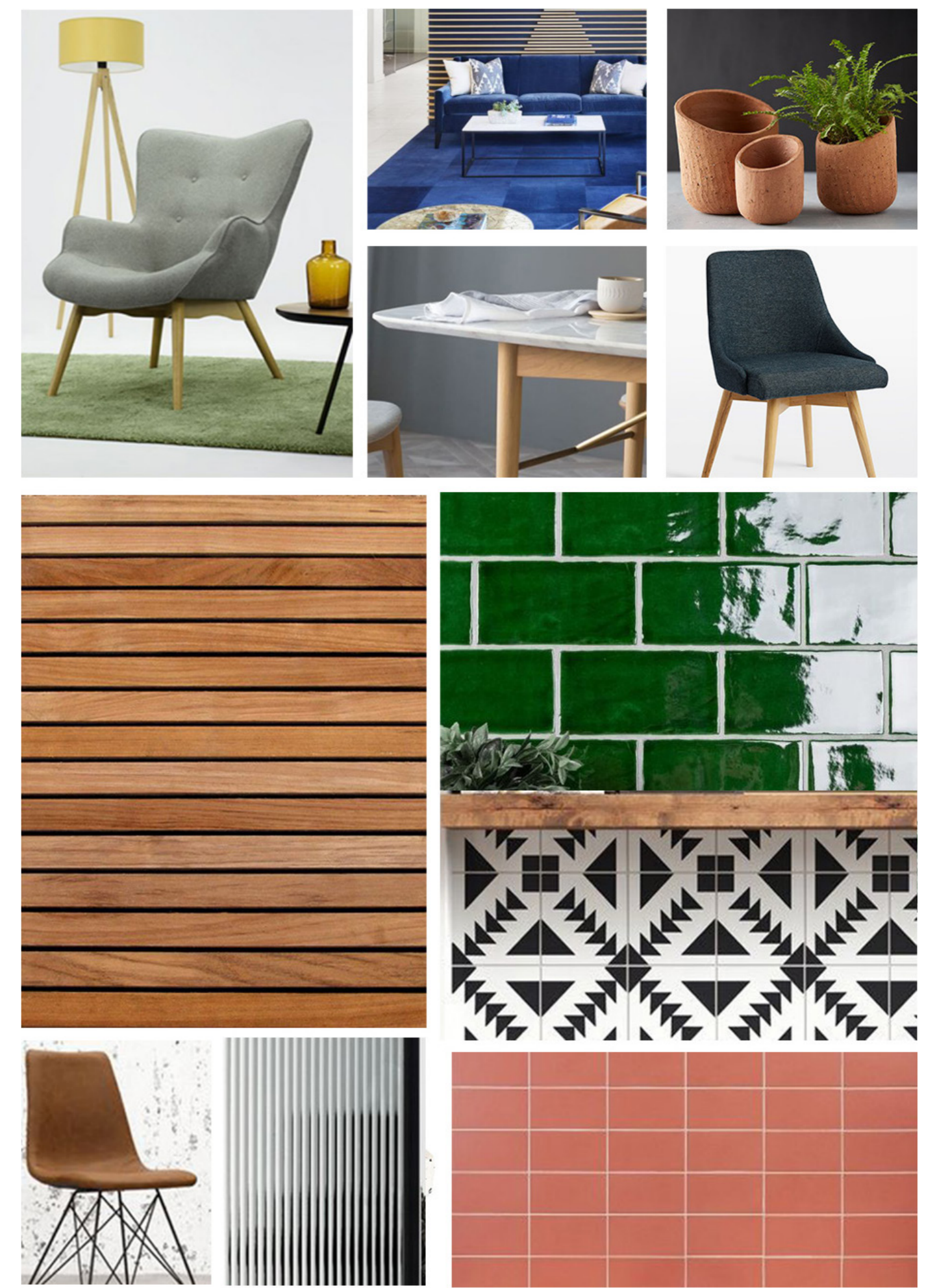
SECTION OF EXTERIOR INSTALLATION



ELEVATION



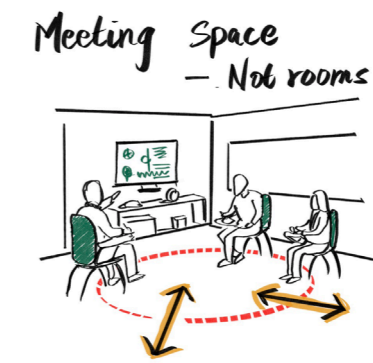
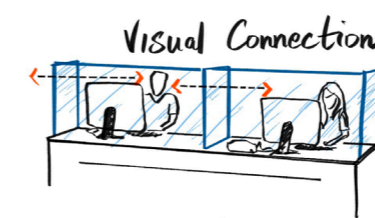
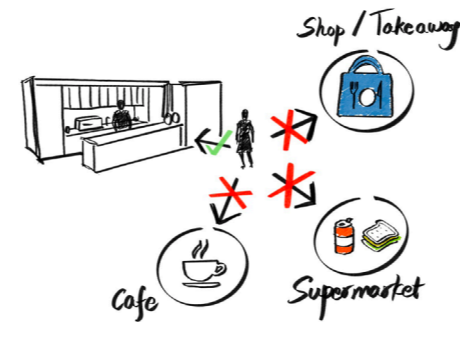
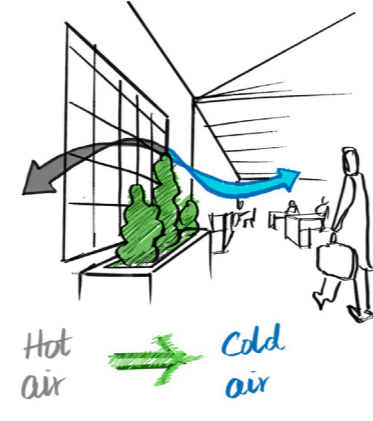
MATERIAL PALATTE





# TECHNOLOGY PARK

The design intent is to emphasize and create a strong harmonic relationship between work and lifestyle in India. To provide more open and eco-friendly amenities at workplace- leisure spaces, meditation spaces, breakout space and collaboration spaces which are embedded with greenery. This helps improving the employees mental health and performance which eventually promotes to productivity and boosts economic growth. By designing a space for employees to get stress-free environment in order to maintain good health. A well organised and optimised workplace design enhances improved well being of the employees, which eventually helps to achieve project goals. Design should enhance the quality of their lives as per the needs, personality, expectations and specifications of the users.



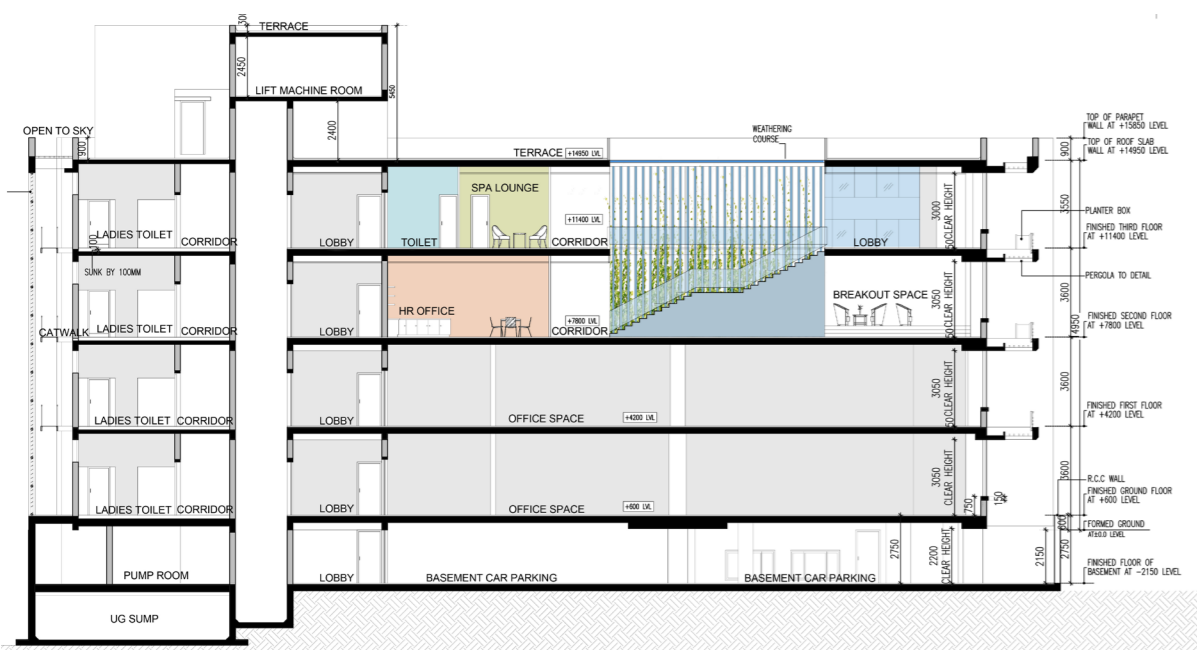
TECHNOLOGY PARK  
SECOND FLOOR PLAN (+7800mm LEVEL)



TECHNOLOGY PARK  
SECOND FLOOR PLAN (+11400mm LEVEL)



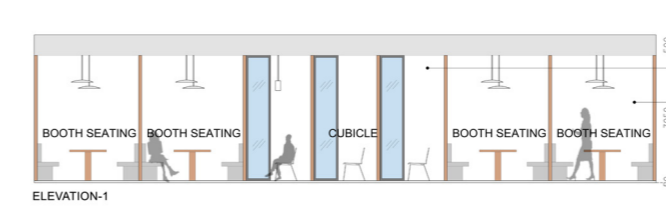
SECTION - A



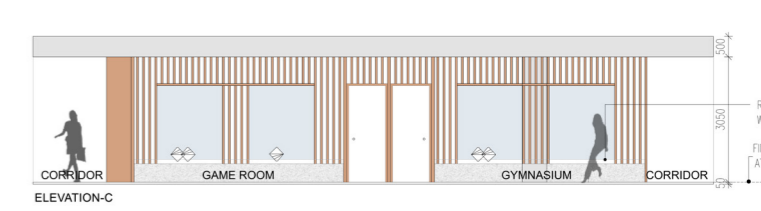
SECTION - B



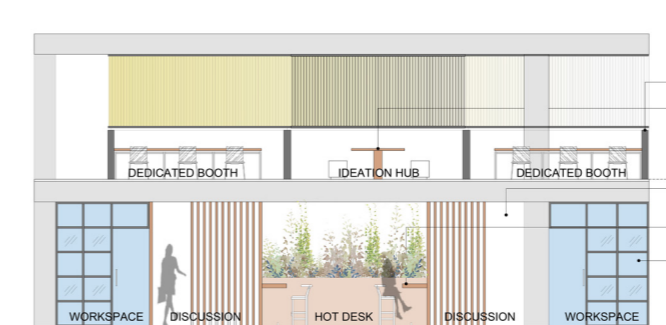
ELEVATION - A



ELEVATION - C



ELEVATION - B



ELEVATION - D

