

Yinuo Qu

Automotive and Transport Design MA



" Wuzhen Tea House " Amphibious tourist vehicle

Yinuo Qu

"Wuzhen Tea House" is an amphibious tourist transportation designed for the city of Wuzhen, China. This vehicle reflects the characteristics of Wuzhen and adds Wuzhen culture. Tourists can experience online mobile booking and convenient tourism, so that further promote the development of local tourism.

Exterior Design

Inspiration

Simple style



Shadow



Wrapped



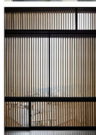
Internal structure



Wupeng boat
(Wuzhen)



Chinese traditional style



Chinese elegant

Email —

Instagram —

@CD4V9CmpQQ5

This PDF has been generated automatically by the Coventry University Degree Show 2020 website. For more information and to see examples of all our students' work, please visit:

covdegreeshow.coventry.ac.uk